

工学系
公務員試験
専門試験問題
演習講座

H28 国家一般職 No.12

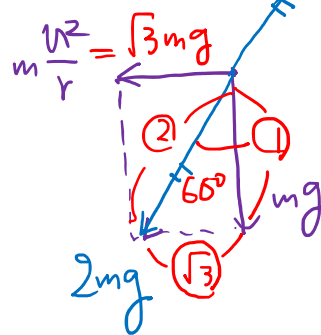
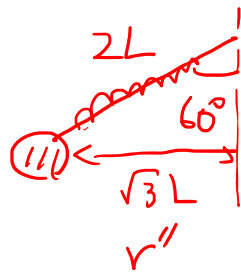
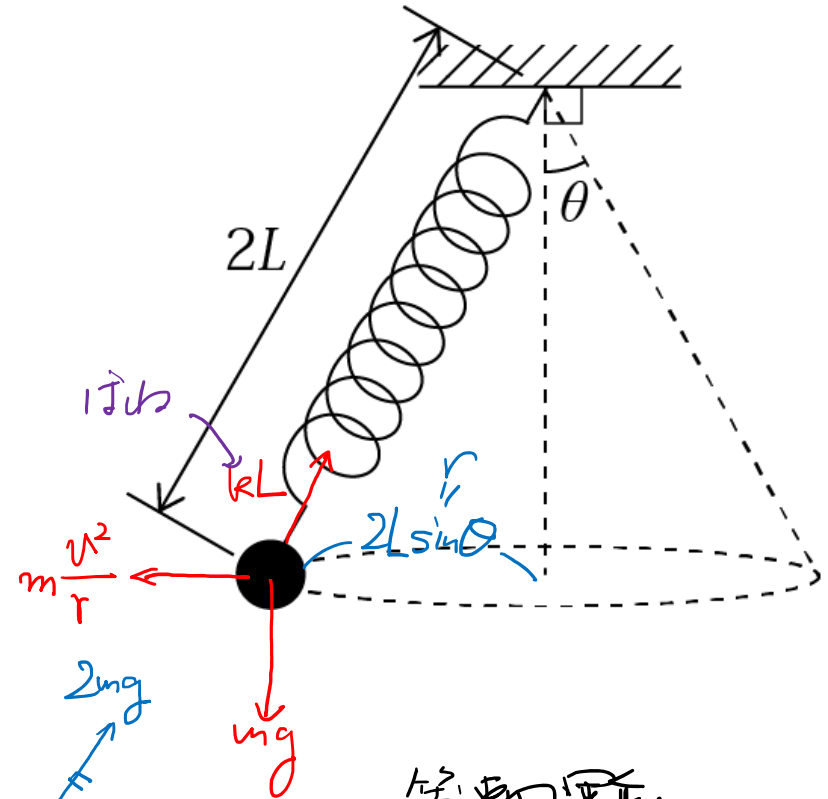
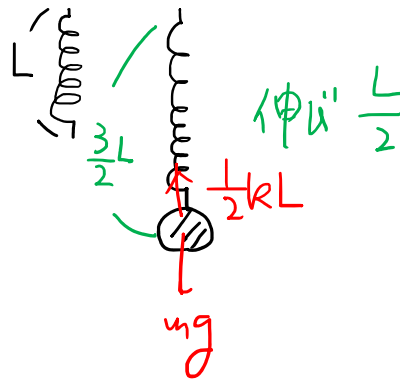
物理

$$\frac{1}{2}kL = mg$$

$$\therefore kL = 2mg \dots \textcircled{1}$$

$$m \frac{v^2}{\sqrt{3}L} = \sqrt{3}mg$$

$$\therefore v = \sqrt{3gL} //$$



等速円運動

- ① 遠心力 $m \frac{v^2}{r}$ を加える
- ② 力が釣り合う